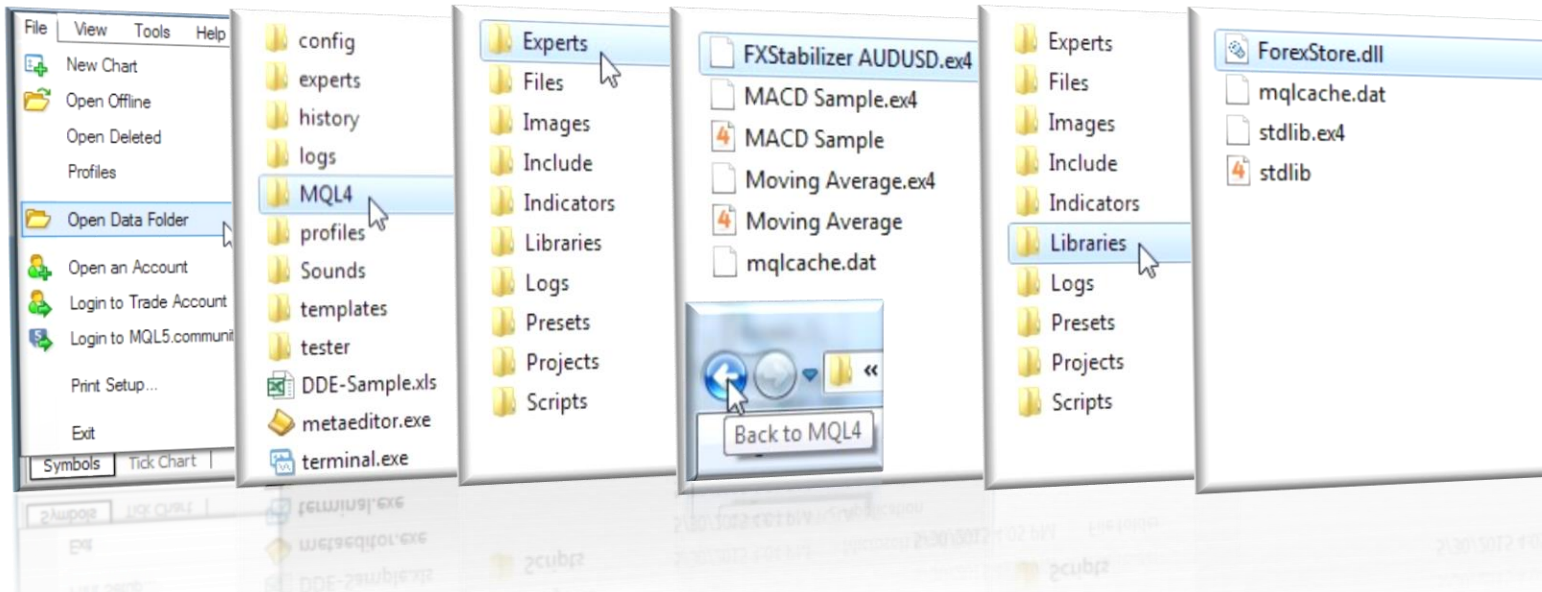


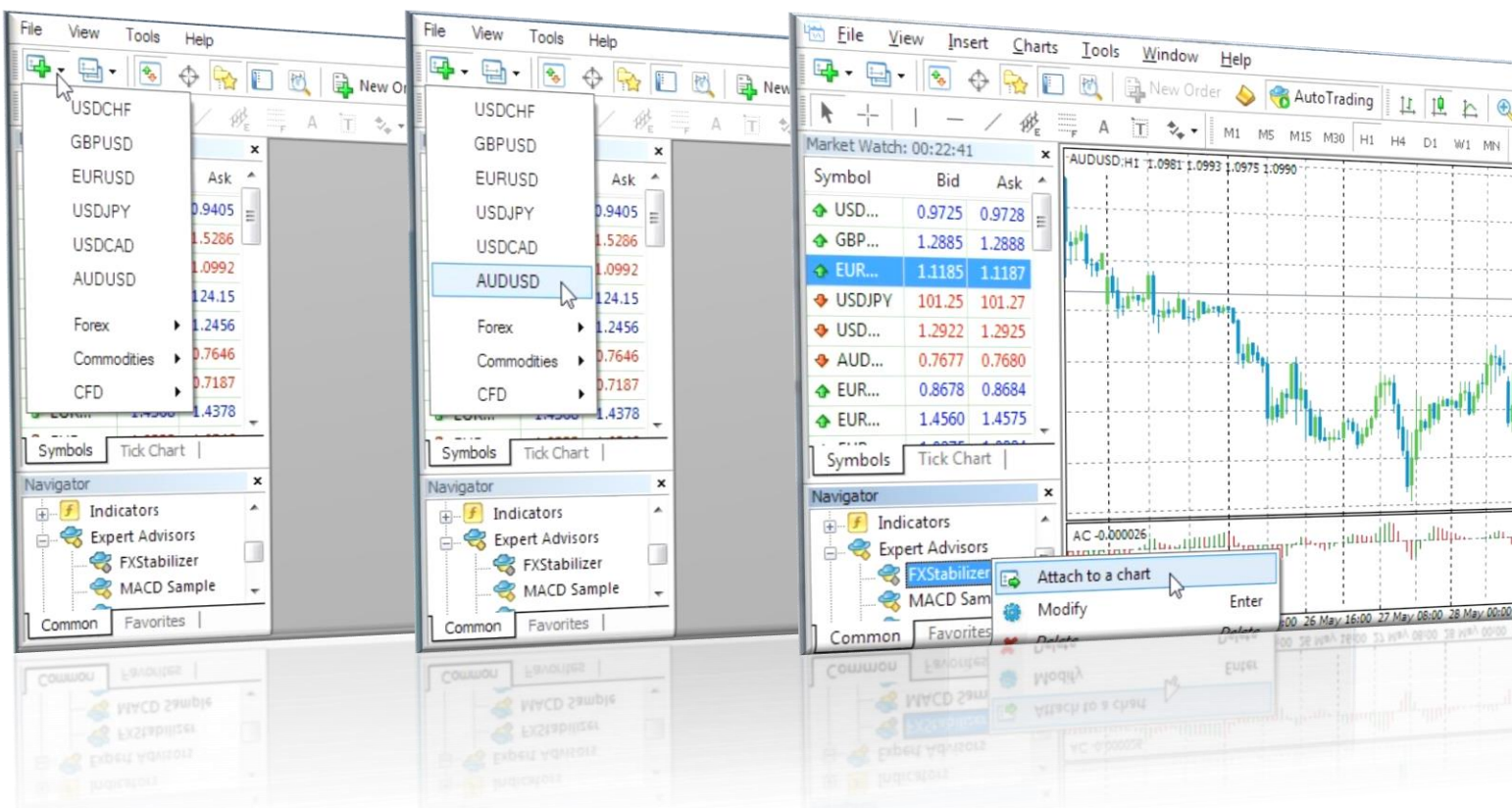
# INSTRUCTIONS FOR INSTALLING FXSTABILIZER AUDUSD AND PREPARING IT FOR TRADING



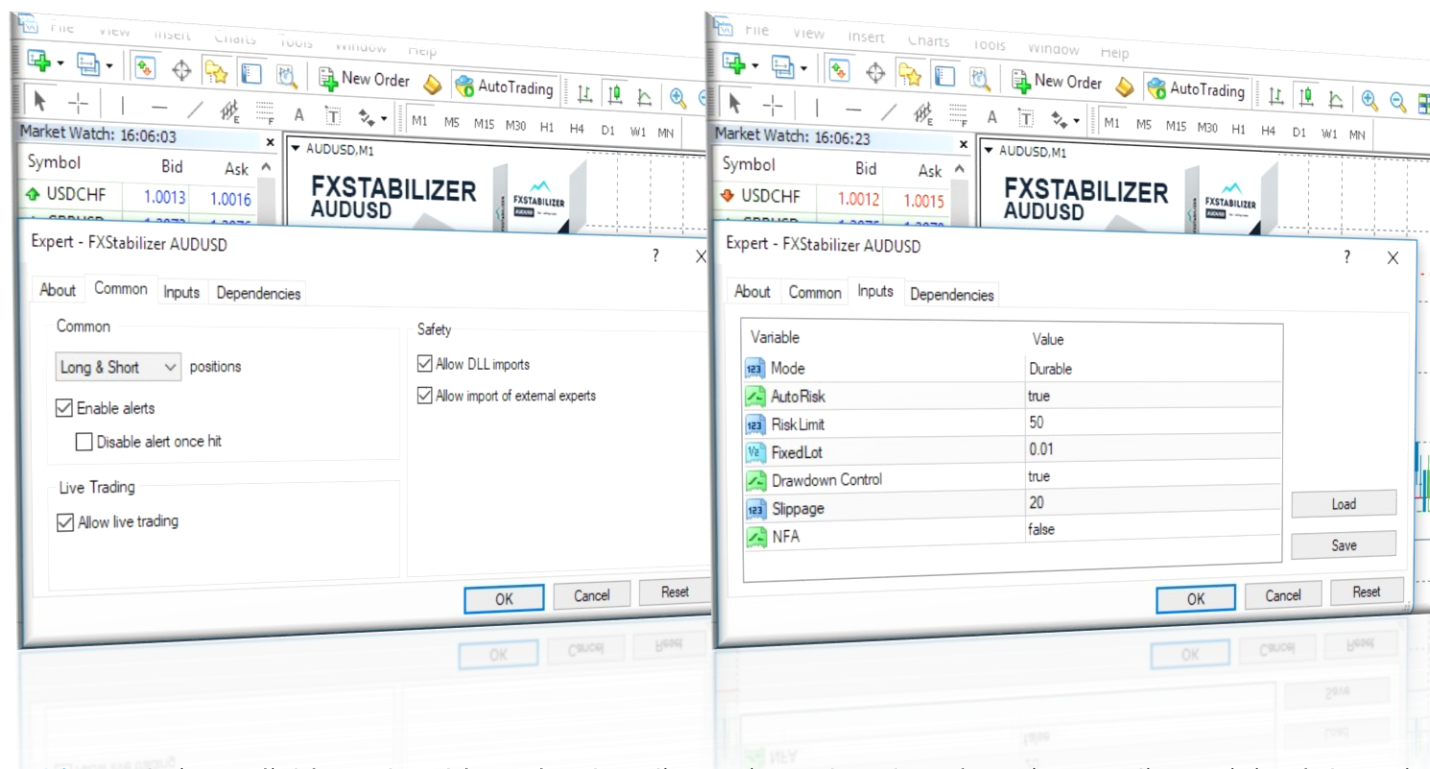
Open your MetaTrader 4. Then copy [FXStabilizer AUDUSD.ex4](#) and [ForexStore.dll](#) from the archive to their folders.



Reboot your MetaTrader 4. Create a new [AUDUSD](#) chart with any timeframe and attach FXStabilizer AUDUSD to the chart.



Allow live trading and DLL imports. Change input settings, or leave the default parameters (recommended).



**Durable** mode is a reliable and stable style of trading. It is perfect for a longtime trading. Minimal deposit needed for Durable mode is **\$1300** using **0.01** lot.

**Turbo** mode is an aggressive and more profitable style of trading of FXStabilizer. It is the best for a risky trading with maximal profit. Minimal deposit needed for Turbo mode is **\$310** using **0.01** lot.

If you leave **AutoRisk** as enabled, FXStabilizer will set the first lot automatically, based on your deposit. If you disable **AutoRisk**, the EA will set the first lot based on the next **FixedLot** parameter. You can set there any lot you want.

**RiskLimit** is a money management of FXStabilizer. You can limit your maximal losses using this option. It is a part of your deposit (in percentage), which you are willing to risk. Works only if **AutoRisk** is "true".

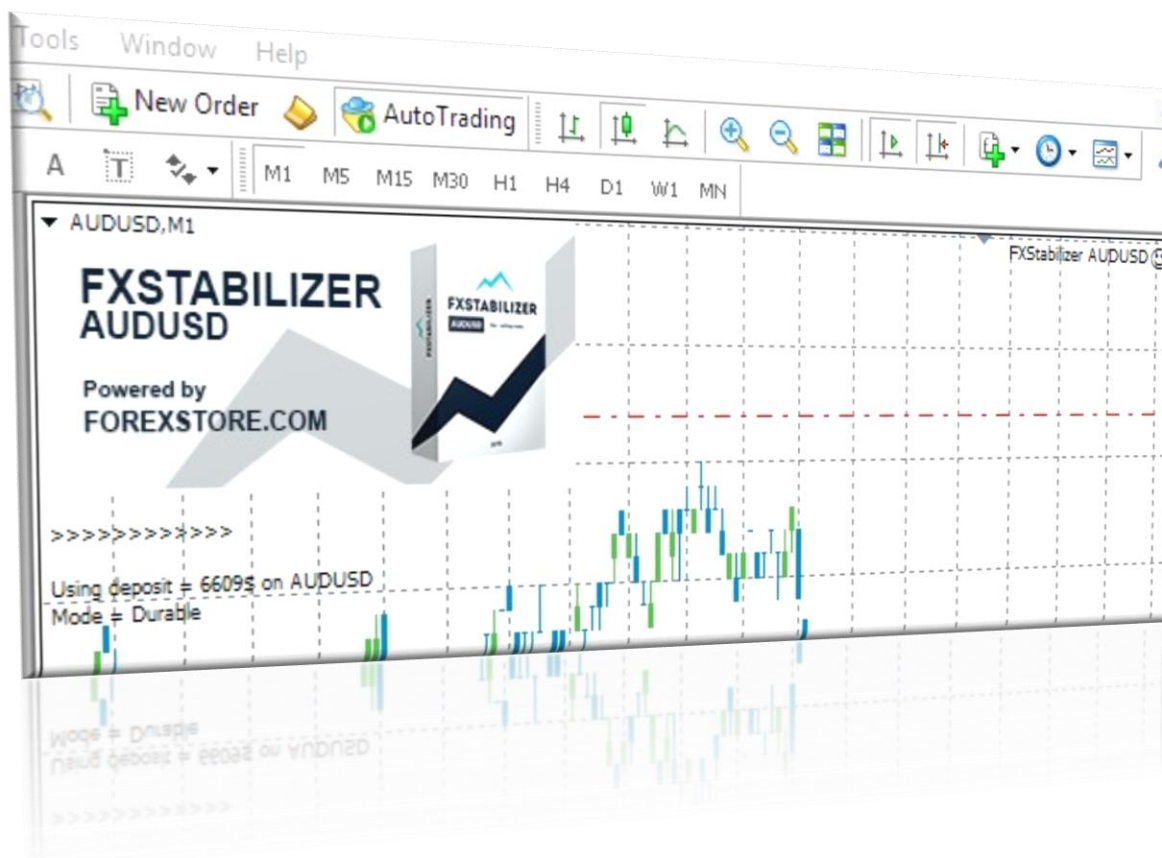
**Drawdown control** – if "true" the EA works as usual and limits a drawdown. If "false" the EA deletes SL in the open orders and stops limiting a drawdown. The open orders will stay in the Market until they are closed by TP or because of a lack of money on a deposit. It helps to wait for a rollback to clients who are willing to take that risk.

You should leave **Slippage** as default to prevent an interruption of the logic of the EA. But there is a possibility to change it, if needed.

**NFA** - if "Yes", the EA will disable opening of possible opposite trades (no hedge) and apply FIFO rule. If "No", the EA will trade without NFA limitations. **Hide Stops** will hide SL and TP for all orders, if that is needed, and the EA will close trades in the necessary moments at their Market prices, same as on our account. Please notice, despite the fact of enabling NFA option, some brokers may show a FIFO error from time to time, but it is not dangerous for the logic of the EA.

We recommend to trade 24/7, using Durable mode with a 30-40% risk, or Turbo mode with a 20-35% risk. Other settings you should leave as default. Recommended deposit is \$3500 using 0.01 lot. Recommended leverage is 1:100 (or higher). But with a sufficient increasing of a deposit and reducing a specified risk, the leverage can be even 1:20.

Make sure that FXStabilizer AUDUSD works properly: AutoTrading is enabled and the process is running.



Contact us, if you have any questions. Our e-mail is [support@fxstabilizer.com](mailto:support@fxstabilizer.com)